



SCYB GIRLS BANTAM LEAGUE RULES

General Rules

1. Games will consist of four quarters, with each quarter being 6-minutes. It is a running clock the first half (clock should stop on free throws and timeouts). The clock will stop on all dead balls in the second half. If a team gets up by 20 points or more, it is a running clock for the rest of the game.
 - a. There will be 1-minute intervals in between quarters and a 5-minute halftime.
 - i. Referees and/or SCYB members running the clock/book, reserve the right to shorten the halftime interval based on game schedules throughout the day.
 - b. Overtime periods consist of 3-minutes.
2. When a Team leads by 10 or more points that team must make two passes in the front court before attempting to shoot the ball. If a shot is attempted before two passes are made, it is a dead ball and the losing team will take over possession. If the ball goes out of bounds after the two passes have been completed and that team retains possession, they do not have to make any more passes before a shot attempt. Both passes must be made in the frontcourt (which is once the player passes halfcourt). A pass from the backcourt to the frontcourt does not count. A handoff does not count as a pass.
3. After the first and second quarters, the players playing in each quarter will get to attempt 1 free throw each to be added to the total score.
4. Each team will have 3 full timeouts and 2-30 second timeouts. Each team is awarded 1 extra timeout in overtime, only if they have used all previous timeouts.
5. Foul shots will be made from the 1st lane marker. *(figure 1) No violation called on the shooter, if he/she jumps over the line. Violations can be called if shooter advances to the ball before it touches the rim. Free throws are played on contact with the rim, not when the ball leaves the shooters hand.
6. Initial possession will be determined by a coin toss. Possession will alternate after that.
7. Players cannot be double teamed until they are inside **3 second lane (the paint)**. On the first two violations the offensive team will take the ball out of bounds. Any subsequent violation will result in the offense shooting **two** technical free throws and retaining possession. *The Double team Technical Fouls count will Reset 0 at the start of the 2nd half.
8. Traveling and Double Dribbling. Referees reserve the right to use discretion when calling these infractions. Our goal is to make the season fun while also assisting with player development. These infractions will be called more often as we progress through the season, but they may be ignored in cases where the infraction does not give an advantage to the offense. Additionally, a

referee may allow more infractions with a less skilled player, due to the goals mentioned previously. The goal is to call all infractions by the tournament.

9. No backcourt defense is allowed all game. Team clearly losing possession of ball must drop back on defense and may not challenge offense until offense crosses the halfcourt line. The defense must remain past the first line after halfcourt AKA "volleyball Line" (figure. 2) and may not defend a player until he/she crosses the halfcourt line completely (body and basketball). The first two violations of back court defense will result in a warning and the offense taking the ball out of bounds. Any subsequent violation will result in the offense shooting **two** technical free throws and retaining possession. *The Backcourt Technical Foul count will Reset to 0 at the start of the 2nd half.
10. Teams may be called for delay of game for not hurrying on substitutions, dead balls, and free throws. The first violation will result in a warning. Any subsequent violations will result in one technical foul shot and possession of the ball.
11. A team may only have one coach standing during the game.
12. Out of bounds plays being passed from front court to back court CAN NOT be contested by the defense if the ball had previously advanced over the center court.
13. Three (3) pointers will not be counted.
14. All players must play one full quarter in the first half and play no more than 3 quarters per game. A goal is for All players to play two full quarters in the game and play no more than 3 quarters per game. The only exception is a team playing with 6 or less players. In this case, each player must play at least 3 quarters. No substitutions are allowed in the first half, unless a player is unable to play. Open substitution is allowed in second half.
15. Teams must have five players to begin a game. A 5-minute grace period will be given. If four players are present, teams must play a 4 on 4 game, with the team with more players receiving a forfeit win.
16. Teams must have five players in a game at all times unless players are not available due to injury or disqualification.
17. All other high school basketball rules will apply.
18. The Home Team as designated by the online website Schedule will wear the Light or (brighter) color side of jersey. Away Team will wear the Darker Color Side. See *(Figure 2) for Bench location and Proper Warm up goal.
19. Isolation and clear out plays are not allowed. Each player should be encouraged to participate in every play. If a referee determines this is happening, the ball will be turned over to the other team.

Clock/Book

1. One member from a home team and one member from an away team is responsible for keeping the clock and the book for a game other than their own. This is typically the head coaches or assistant coaches from another team. The example schedule is as follows:



	Friday (Creekside)		Saturday (Southern)		Saturday (RSMS)			
	6:30PM	7:40PM	2:20PM	3:30PM	11:15AM (training)	12:25PM	1:35AM	2:45PM
Game Time	A	B	C	D	E	F	G	H
Clock/Book	B	A	D	C	F	E	H	G

EXAMPLE: Play Game time A; then keep Clock book for A time

2. The only people allowed at the clock/book table is the Home and Away team personnel responsible for keeping the clock/book and any SCYB board member.
 - a. Family members, players, children, etc. are not allowed at the table. Exceptions can be made upon request to a SCYB board member.

If a HEAD COACH has a discrepancy with the clock/book or personnel responsible, it is OK to question the accuracy, if it is done in a respectful and appropriate manner. Assistant coaches are not allowed to question or approach the table for discrepancies but are allowed to approach the table to ask game specific questions like foul count or timeouts remaining.

Equipment

1. The goal will be set at 8.5'.
2. Ball size is 27.5" (size 5).
 - a. Practice balls - Each team will be awarded one (1) practice ball for the season, that must be returned at the end of the season. League coordinator(s) are responsible for ensuring all team balls are collected.

Conduct & Discipline

1. Head coaches are responsible for the conduct of all personnel on their bench, including assistant coaches.
2. A team may only have one coach standing at any given time. The first offence will result in a warning from the referee(s). Any subsequent violations will result in a technical foul and possession of the ball for the opposite team. Coaches must stay at the bench.
3. Any player that receives 2 technical fouls in one game will be ejected from the game. The SCYB board will determine any further action. SCYB Board reserves the right to use judgement in the cases of fighting or behavior problems.
4. A coach who receives two technical fouls and/or is ejected from the game will automatically be required to serve an immediate one game suspension not to include the game from which they were ejected. A coach ejected from two games will not be allowed to coach the remainder of the year. Coaches may appeal these suspensions to the executive board of directors.

5. Parents and spectators are to refrain from yelling and taunting the players, coaches, referees, and or other spectators. Under NO circumstances should a parent or spectator EVER approach a referee or opposing coach prior to, during, or after the game with a complaint.

Figure 1.

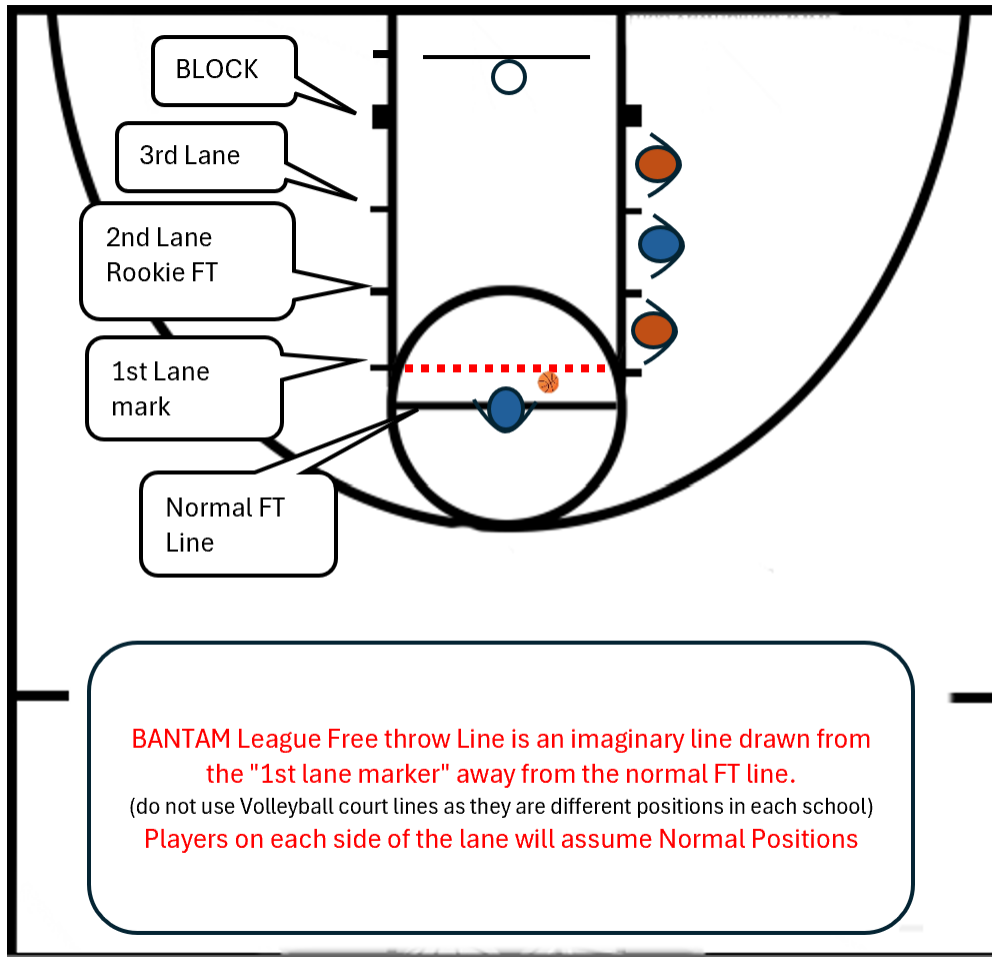
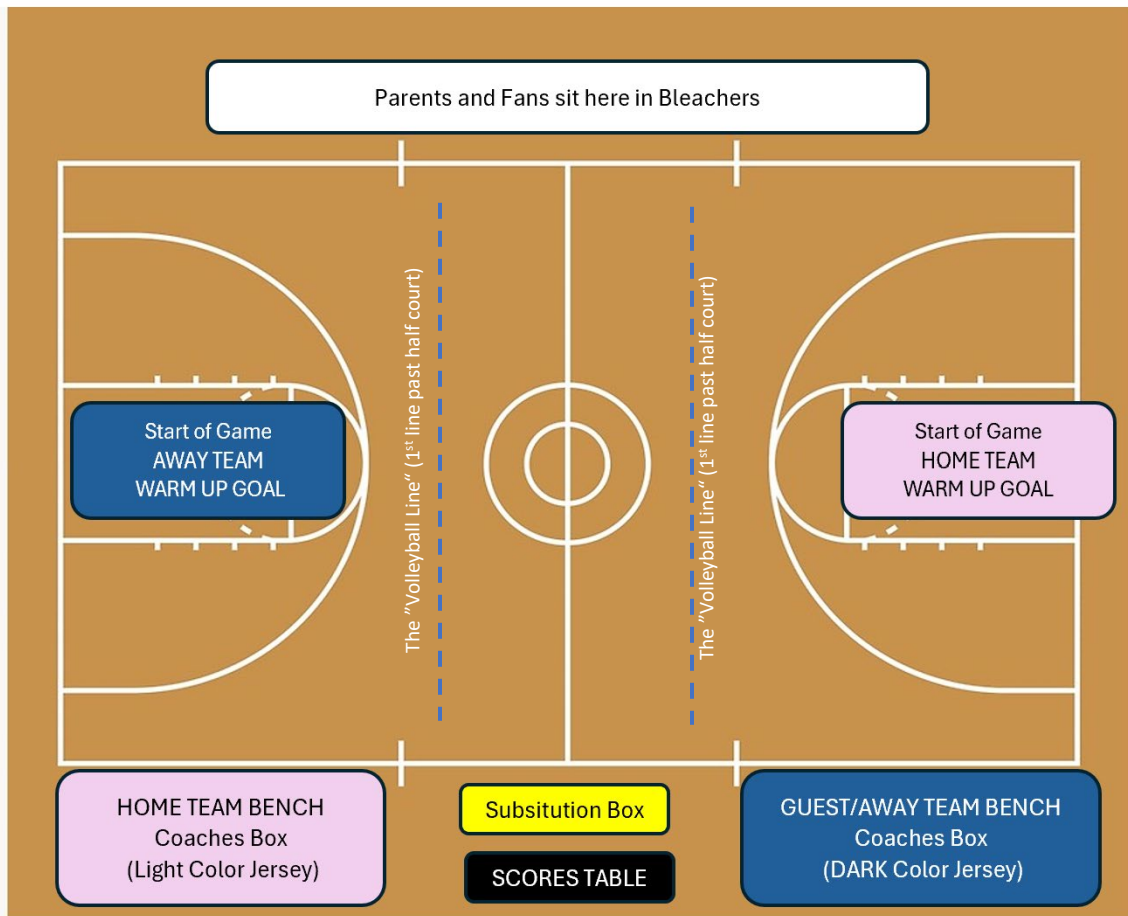


FIGURE 2.



Changes Log

Date	Change made by:	Details of change
2/8/2024	MJG	Initial Issue
12/2/2024	MJG	Update to Reflect Co-Ed league change (RED text is GIRLS league UNIQUE)